

July 17, 1995

DWG:dg

Vasons.d.fz

INTRODUCED BY: GREG NICKELS

PROPOSED NO. 95 - 579 *

ORDINANCE NO. **11979**

AN ORDINANCE relating to drug-free zones; approving maps of the location and boundaries of areas in the Vashon School District No. 402 within which unlawful transactions in controlled substances are subject to enhanced penalties pursuant to RCW 69.50.435, and adding a new section to K.C.C. 12.82.

PREAMBLE:

K.C.C. 12.82 establishes a procedure for the production or reproduction of maps depicting the location and boundaries of parks, schools and areas within one thousand feet of schools, within which unlawful transactions in controlled substances are subject to enhanced penalties as imposed pursuant to RCW 69.50.435. Upon request of the governing body of the Vashon School District No. 402, King County has prepared maps depicting such boundaries. It is in the public interest to provide notice of the location of such areas and to expedite prosecution, conviction, and enhanced penalties for cases of unlawful transactions in controlled substances in such locations.

BE IT ORDAINED BY THE COUNCIL OF KING COUNTY:

SECTION 1: The boundaries of drug-free zones surrounding the following schools as listed in Exhibits "A" through "C" located within the Vashon School District No. 402 are hereby adopted:

- A. Burton Elementary School.
- B. Vashon School District No. 402 - Central Campus.
- C. Vashon Elementary School.

1
2
3
4
5
6
7
8
9
10
11
12
13
14
15
16
17
18
19
20
21
22
23
24
25
26
27
28
29
30
31
32
33

July 17, 1995

1 The maps produced by the county engineer of the location and
 2 boundaries of the drug-free zones surrounding these schools
 3 within the Vashon School District No. 402, as supported by
 4 the Vashon School District No. 402, are on file with the
 5 department of public works, roads and engineering division
 6 and the department of executive administration, records and
 7 elections division.

8 INTRODUCED AND READ for the first time this 28th
 9 day of August, 1995.

10 PASSED by a vote of 9 to 0 this 25th day of
 11 September, 1995.

12 KING COUNTY COUNCIL
 13 KING COUNTY, WASHINGTON

14 Kent Pullen
 15 Chair

16 ATTEST:

17 Ronald A. Peterson
 18 Clerk of the Council

19 APPROVED this 6th day of October, 1995.

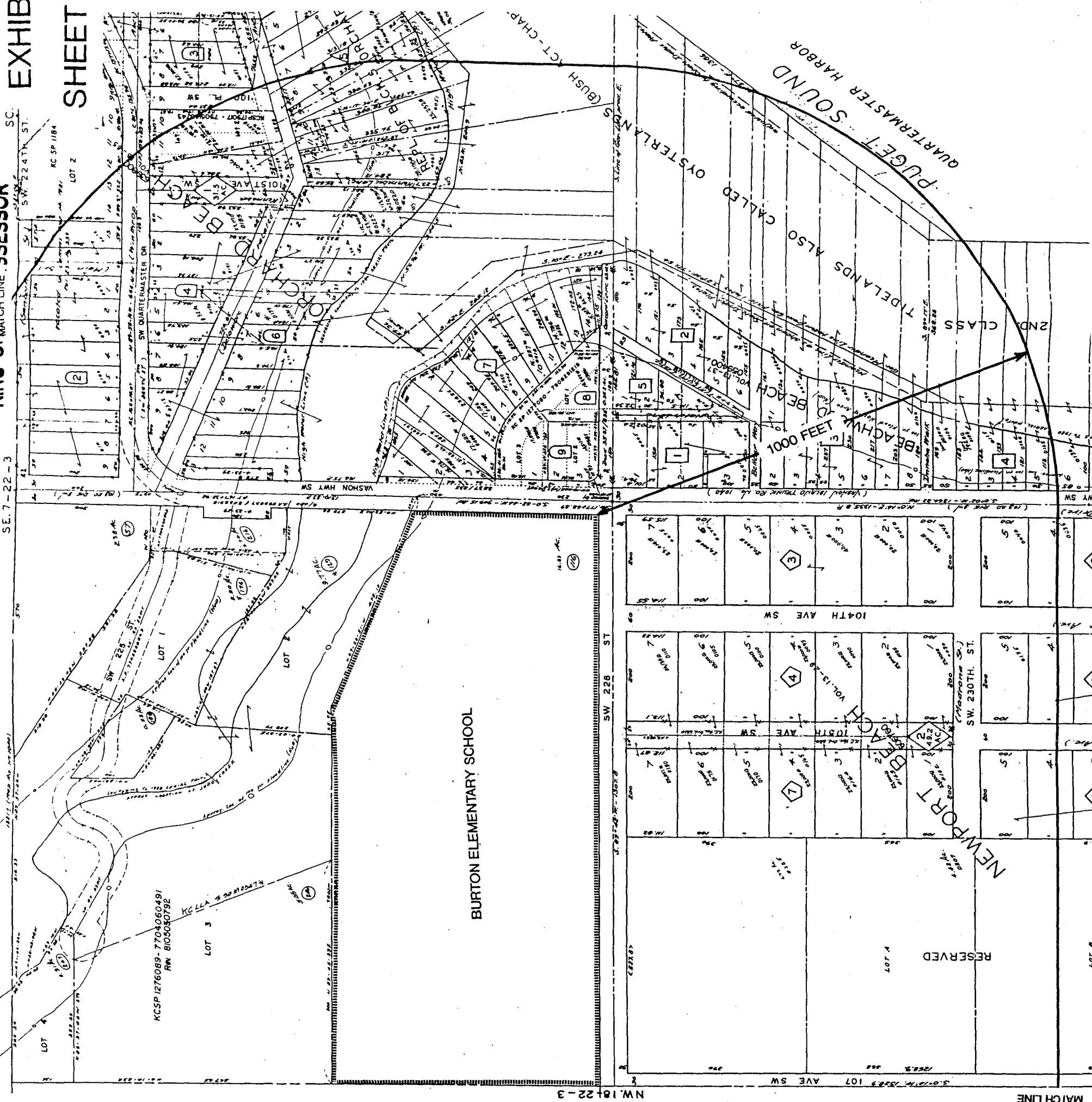
20 Samy Lake
 21 King County Executive

22 Attachments:

23 A. Maps depicting exhibits "A" through "C"

TO SHOW ACCURATE RELATIONSHIP TO ADJACENT MAPS

TO SHOW ACCURATE RELATIONSHIP TO ADJACENT MAPS



MATCH LINE

NW 18122-3

KCSP 1276089-7704060491
R# 8105080792

BURTON ELEMENTARY SCHOOL

RESERVED

NEWPORT BEACH

SW 230TH ST

104TH AVE SW

SW 228 ST

WASHINGTON ST

BEACHWAY BEACH

1000 FEET BEACH

TIDELANDS ALSO CALLED

PUGET SOUND

QUARTERMASTER HARBOR

BUSH ACT-CHAP

SE 7-22-3

SE 7-22-3

SE 7-22-3

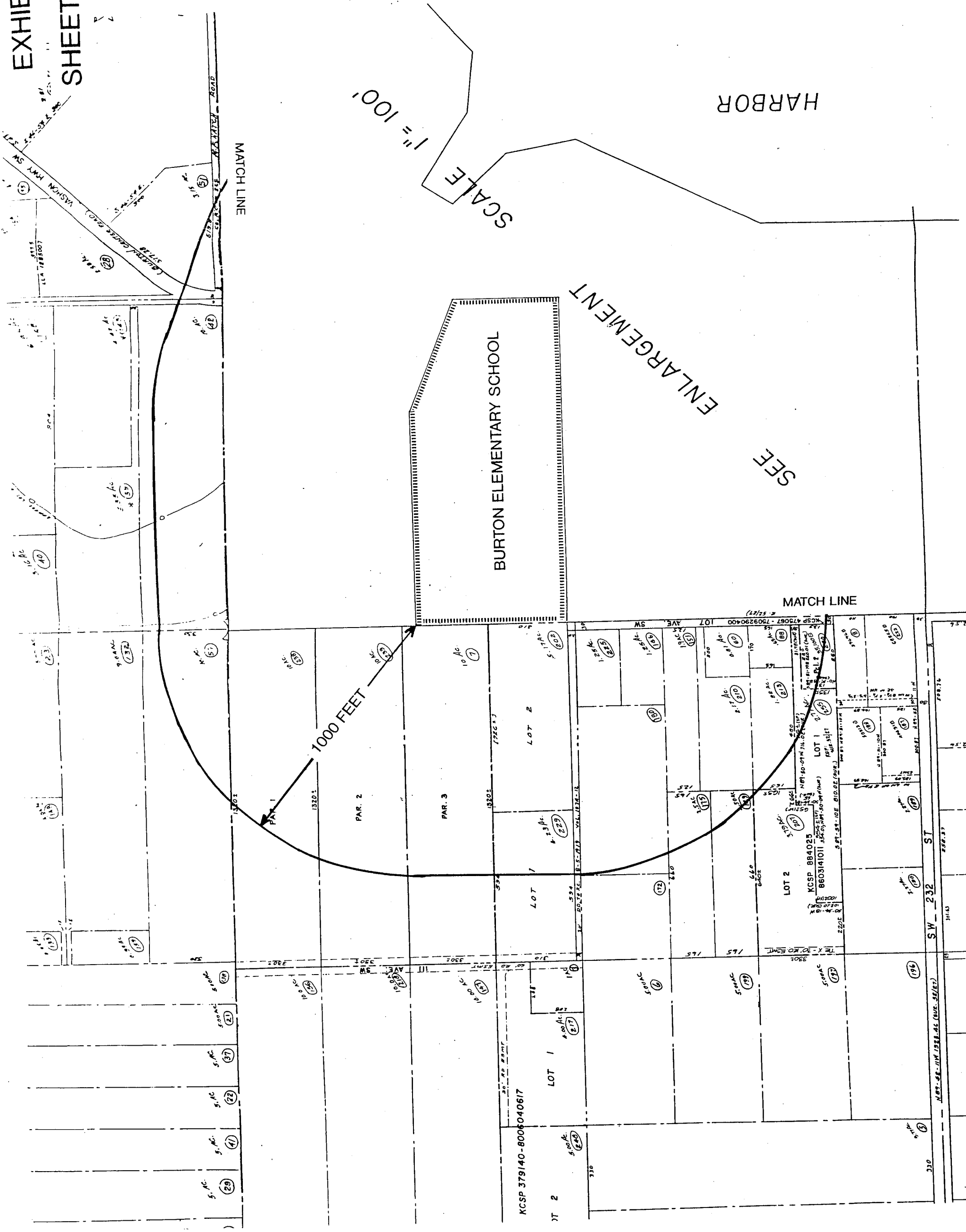
SE 7-22-3

SE 7-22-3

SE 7-22-3

SE 7-22-3

SE 7-22-3



HARBOR

SCALE 1" = 100'

ENLARGEMENT

SEE

MATCH LINE

1000 FEET

BURTON ELEMENTARY SCHOOL

SW - 232 ST

SW - 232 ST

SW - 232 ST

SW - 232 ST

KCSP 379140-8006040617

LOT 2

LOT 1

LOT 2

LOT 1

LOT 2

LOT 1

LOT 2

LOT 1

LOT 2

LOT 1

LOT 2

LOT 1

LOT 2

LOT 1

LOT 2

LOT 1

LOT 2

LOT 1

LOT 2

LOT 1

LOT 2

LOT 1

LOT 2

LOT 1

LOT 2

LOT 1

LOT 2

LOT 1

LOT 2

LOT 1

LOT 2

LOT 1

LOT 2

LOT 1

LOT 2

LOT 1

LOT 2

LOT 1

LOT 2

LOT 1

LOT 2

LOT 1

LOT 2

LOT 1

LOT 2

LOT 1

LOT 2

LOT 1

LOT 2

LOT 1

LOT 2

LOT 1

LOT 2

LOT 1

LOT 2

LOT 1

LOT 2

LOT 1

LOT 2

LOT 1

LOT 2

LOT 1

LOT 2

LOT 1

LOT 2

LOT 1

LOT 2

LOT 1

LOT 2

LOT 1

LOT 2

LOT 1

LOT 2

LOT 1

LOT 2

LOT 1

LOT 2

LOT 1

LOT 2

LOT 1

LOT 2

LOT 1

LOT 2

LOT 1

LOT 2

LOT 1

LOT 2

LOT 1

LOT 2

LOT 1

LOT 2

LOT 1

LOT 2

LOT 1

LOT 2

LOT 1

LOT 2

LOT 1

LOT 2

LOT 1

LOT 2

LOT 1

LOT 2

LOT 1

LOT 2

LOT 1

LOT 2

LOT 1

LOT 2

LOT 1

LOT 2

LOT 1

LOT 2

LOT 1

LOT 2

LOT 1

LOT 2

LOT 1

LOT 2

LOT 1

LOT 2

LOT 1

LOT 2

LOT 1

LOT 2

LOT 1

LOT 2

LOT 1

LOT 2

LOT 1

LOT 2

LOT 1

LOT 2

LOT 1

LOT 2

LOT 1

LOT 2

LOT 1

LOT 2

LOT 1

LOT 2

LOT 1

LOT 2

LOT 1

LOT 2

LOT 1

LOT 2

LOT 1

LOT 2

LOT 1

LOT 2

LOT 1

LOT 2

LOT 1

LOT 2

LOT 1

LOT 2

LOT 1

LOT 2

LOT 1

LOT 2

LOT 1

LOT 2

LOT 1

LOT 2

LOT 1

LOT 2

LOT 1

LOT 2

LOT 1

LOT 2



